

CardDeluxe Installation

Audio Interface Installation

Always use the approved driver from the SoundCheck DVD or from our website:

<https://support.listeninc.com/hc/en-us/sections/200370694-Drivers>

Important! Please install SoundCheck BEFORE installing the CardDeluxe drivers. The SoundCheck installation process sets the customized configuration of the CardDeluxe for use with SoundCheck. If the CardDeluxe driver is already installed, you will need to configure the driver manually. See [Page 2](#).

Card Setup

Before installing the audio card in the computer check the Input and Output level jumpers, the Input level jumpers should be set on +4 dBu and the Output level jumpers should be set on -10dBv.

Important: *The actual value for the input is +4 dBV (dB referenced to 1.00 volt) as opposed to +4dBu. There is a silk screening error on the sound card PC board, which shows the units to be dBu instead of dBV.*

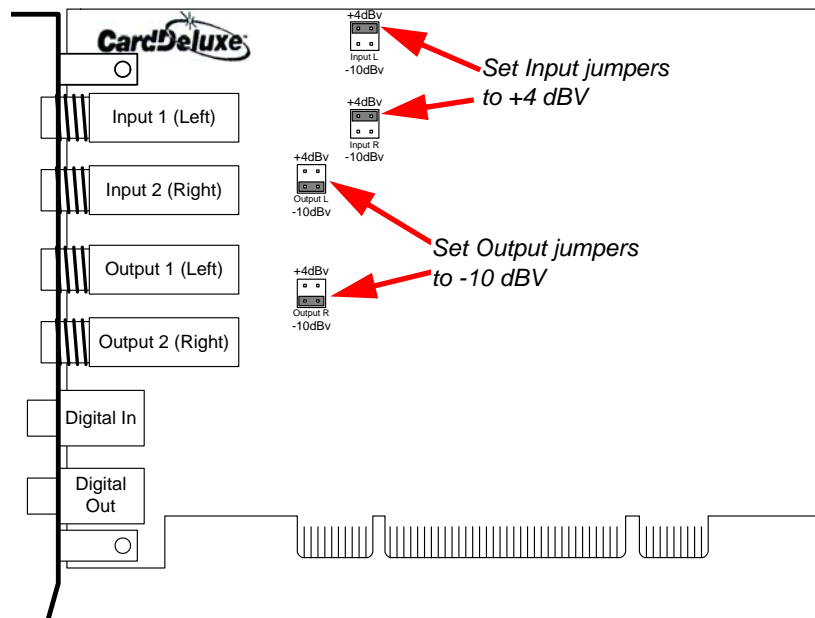


Figure 1-1: CardDeluxe Jumper Settings

1. After installing the card in the computer, Windows will prompt you to install the driver. Use the latest driver found on the SoundCheck[®] installation DVD.
2. Once the driver has been installed refer to **Audio Device System Settings** of the SoundCheck Manual for Windows 7 or XP instructions.
3. Refer to the **Hardware Compatibility List** in the SoundCheck Manual for information on using MME, WDM or ASIO drivers in Windows 7 and Windows XP.

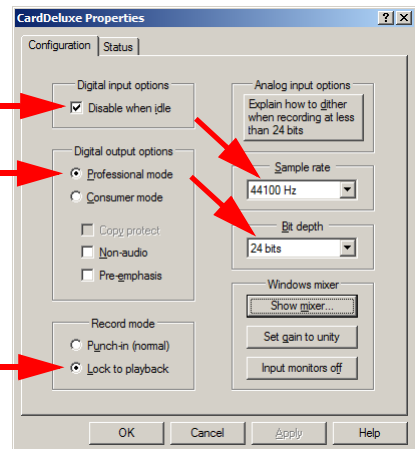
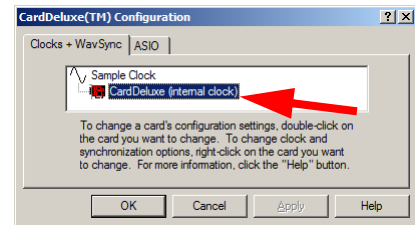
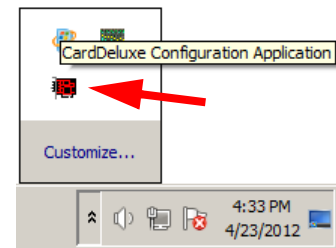
CardDeluxe Settings in Windows 7/8

These settings must be made after installing the CardDeluxe.

1. Click on the CardDeluxe Configuration icon in the Windows Tray.
2. Double-click on the CardDeluxe (Internal clock) to be configured.
3. Digital Input - Select "Disable when idle"
4. Digital Output - Select "Professional"
5. Record Mode - Select "Lock to playback"
6. Sample Rate - The SoundCheck Hardware Configuration sample rate must be set to same value that is used in this panel. Do not use "Automatic".
7. Bit Depth - The SoundCheck Hardware Configuration bit depth must be set to same value that is used in this panel. Do not use "Automatic".

Windows 7/8 64 bit

Important: *You must set the sample rate and the bit depth to 24-bit mode via the CardDeluxe control panel. It is not updated automatically from the SoundCheck Hardware Editor.*



CardDeluxe Settings in Windows XP

These settings are part of the default SoundCheck installation process in Windows XP.

1. Open the CardDeluxe configuration panel from the icon in the Windows tray
2. Enable clock master should **NOT** be checked
3. UnCheck Enable advanced monitoring
4. Check Lock to playback
5. Digital Output options set to "Professional"

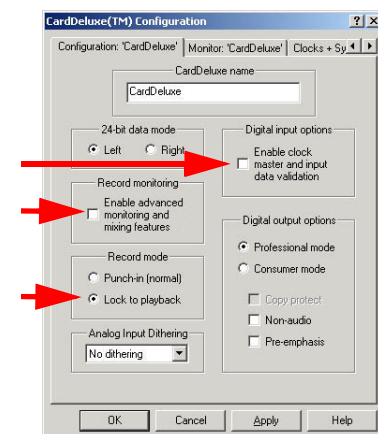


Figure 1-2: Configuration Screen

6. The Analog Input should be turned all the way down
7. The Analog Output should be turned all the way up
8. The Digital Input should be turned all the way down
9. The Digital Output should be turned all the way up

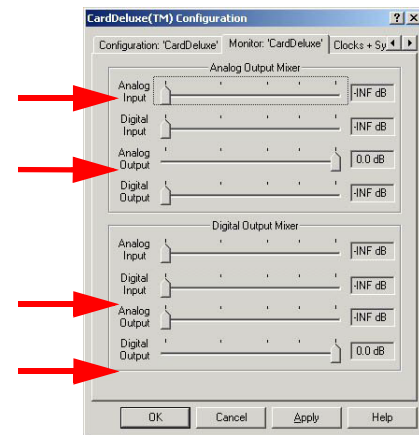


Figure 1-3: CardDeluxe mixer settings

10. Right click on CardDeluxe clock and set to Internal clock.

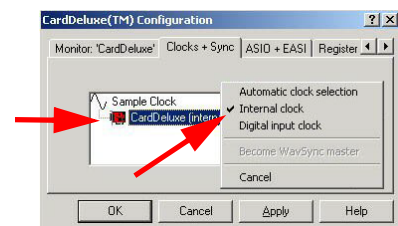


Figure 1-4: Internal clock settings

Hardware Settings

The System Hardware in SoundCheck should be setup according to the type of connection used for the output of the CardDeluxe. The Vp values for the output are different depending on whether using Balanced or Single-ended connections. Hardware presets are available by clicking on the **Import button** in the Hardware Editor and then selecting the appropriate file in: **C:\SoundCheckxx.x\Steps\Hardware**. See [Figure 1-5](#).

Hardware presets are setup with general values for Vp and Latency. Greater precision can be achieved by running a calibration on each channel of the audio interface. Please refer to **Calibrate Audio Interface** in the SoundCheck Manual for instructions. Calibrated values can also be entered from the calibration sheet that came with the audio interface supplied by Listen.

Windows® 32 bit examples of Single-ended vs Balanced hardware settings are shown in [Figure 1-6](#).

Windows® 64 bit examples of Single-ended vs Balanced hardware settings are shown in [Figure 1-7](#).

Note that the Latency value is different between 32 bit and 64 bit Windows®. Please refer to the **Hardware Compatibility List** in the SoundCheck Manual for more information.

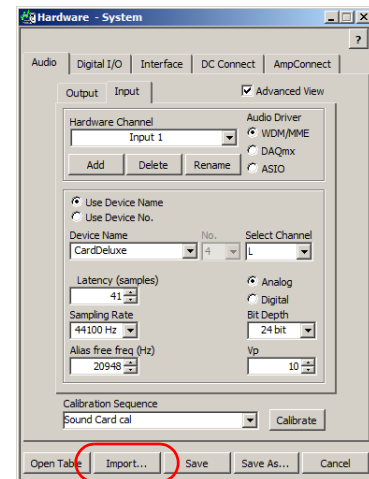


Figure 1-5: Import Button

Windows® XP/Windows® 7 32 bit

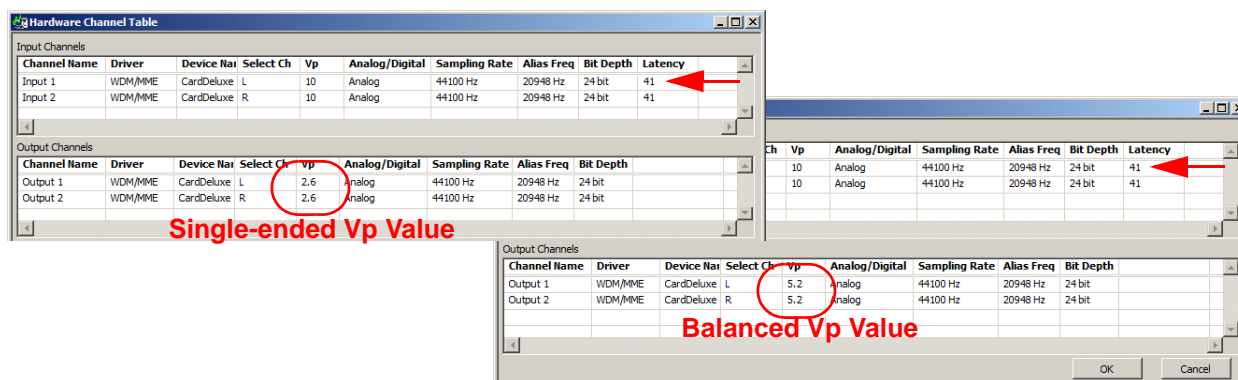


Figure 1-6: Single-ended vs Balanced Output in 32 bit

Windows® 7 64 bit

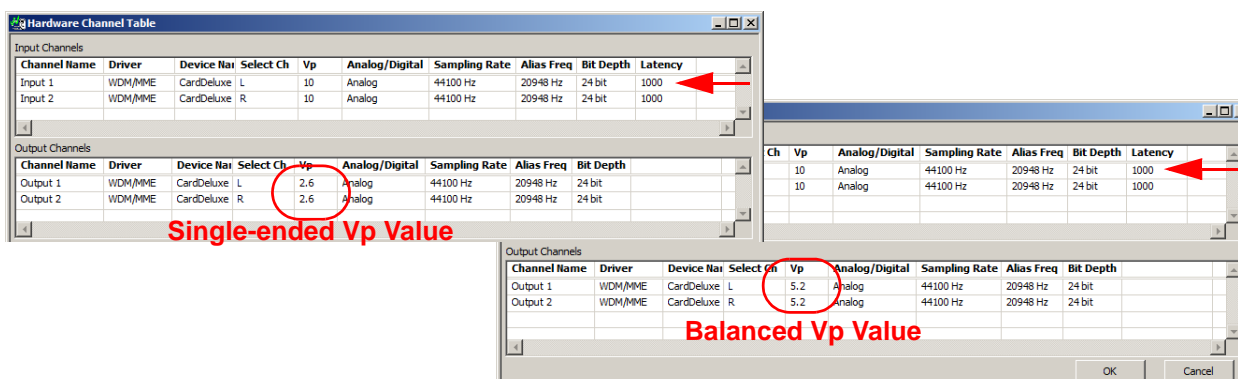


Figure 1-7: Single-ended vs Balanced Output in 64 bit

Rev 030119

580 Harrison Ave, Suite 3W • Boston, MA 02118 • 617-556-4104 • Fax 617-556-4145 • www.listeninc.com

© Listen, Inc 2000 - 2019. All rights reserved. SoundCheck® is a trademark of Listen, Inc.

® Microsoft, Windows 7 and Windows 10 are registered trademarks of Microsoft Corporation.