



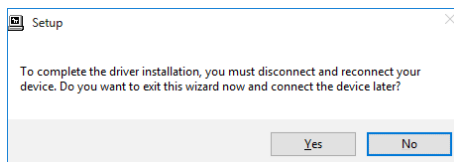
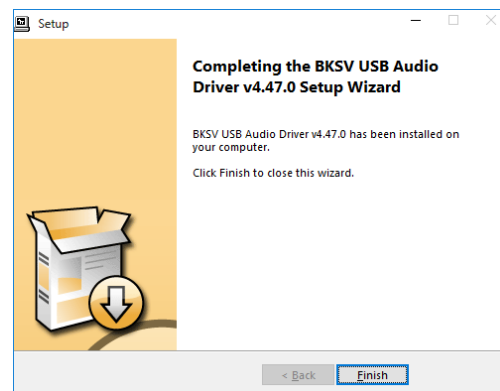
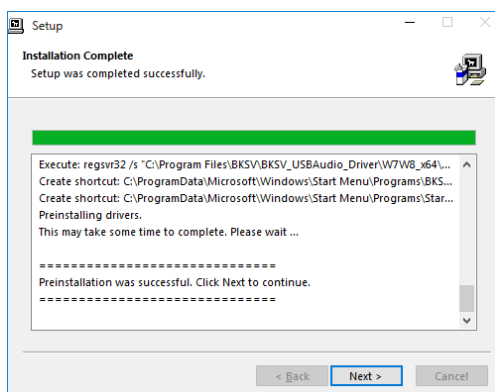
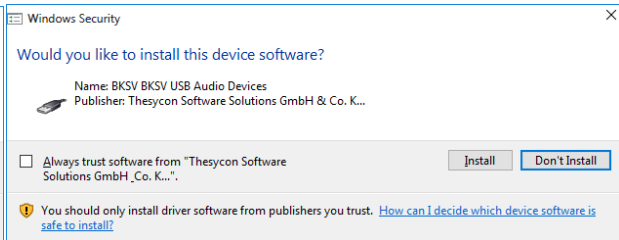
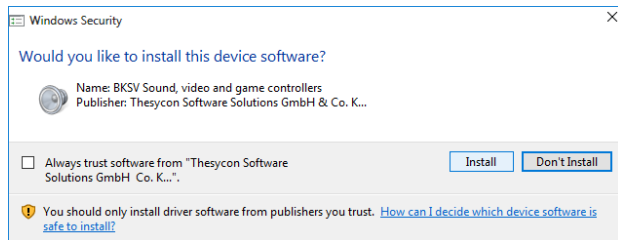
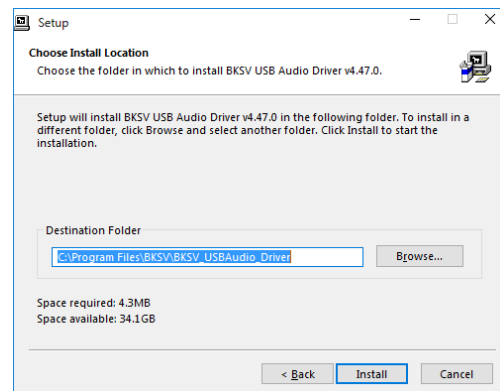
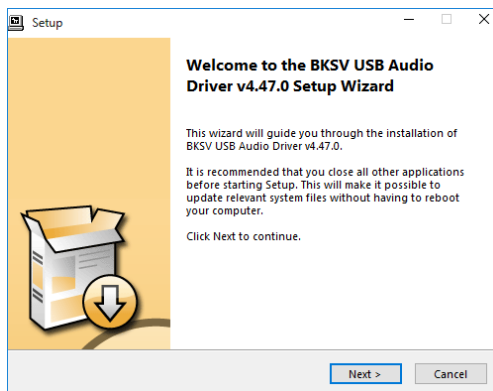
B&K 3670 Setup for Windows

Always use the approved driver from the SoundCheck DVD or from our website:

<https://support.listeninc.com/hc/en-us/sections/200370694-Drivers>

Installation

Run the latest driver install file from the Listen, Inc. website or from the Listen Driver Disk and follow the prompts. Even though the driver installation does not indicate to restart the computer after the install is finished, a restart is still recommended.



SoundCheck Hardware Editor

The Hardware Editor in [Figure 4-1](#) shows the general settings for the Input and Output Vp values as well as the Latency. Interfaces sold by Listen include a data sheet with more precise Vp values that you can enter in the Hardware Editor.

A default file, **B&K 3670 96k.Har**, is included in the driver folder provided by Listen, Inc. Click **Import** in the Hardware Editor and navigate to the driver folder to select the HAR file.

(This HAR file is also included with SoundCheck 17.02 and later.)

- **Sampling Rate:** Only one rate can be selected for all Input and Output channels of an interface

Note: *The B&K 3670 only operates at a sample rate of 96 kHz even though other rates may be available in the SoundCheck Hardware Editor.*

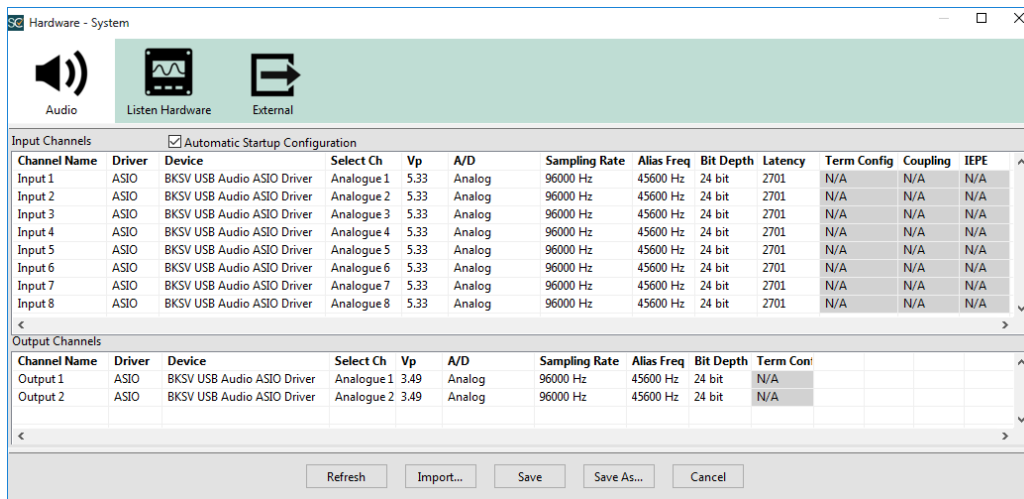


Figure 4-1: Hardware Editor

ASIO Control Panel

Open the ASIO Control Panel from the SoundCheck Hardware Editor by right clicking on a **B&K 3670** Input or Output Channel Name and select **ASIO Control Panel** from the list.

The Status tab shows that the device is recognized and the Current Sample Rate as set in the Hardware Editor.

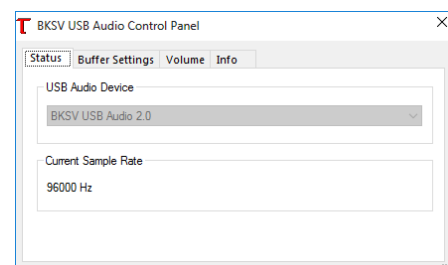


Figure 4-2: ASIO Control Panel - Status

Buffer Settings Tab

Buffer Settings affect the Latency settings used in the SoundCheck Hardware editor. These must be set as noted below to agree with Hardware Editor default Latency of 2701 Samples.

- Preferred ASIO Buffer Size - 1024 samples
- Safe Mode - Selected

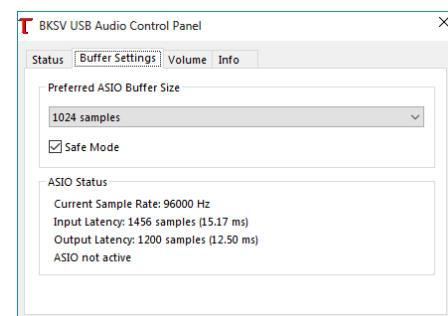


Figure 4-3: Buffer Settings

Volume Tab

All Input and Output controls must be set to maximum level.

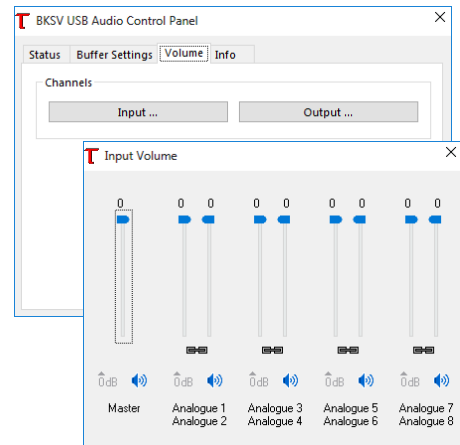


Figure 4-4: ASIO Control Panel - Input/Output Volume Tabs

Info Tab

This shows the device info for the B&K 3670:

- Firmware Revision
- Serial Number

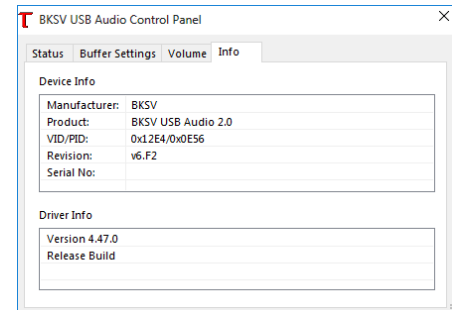


Figure 4-5: Info Tab

CCLD Power

CCLD power can be turned on or off individually per channel by switching the internal DIP switches.

- Access to the DIP switches requires opening the B&K 3670 as noted in the Bruel & Kjaer manual.
- CCLD Bruel & Kjaer transducers will require that the switches are in the **ON** position.
- [Figure 4-6](#) shows that all channels have the CCLD power turned “on” except for channels 2 and 3.
- CCLD power must be turned off for all channels if you need to run the Audio Interface Calibration process as detailed in the main SoundCheck Manual. CCLD power can be turned back on as needed after the calibration process is complete.



Figure 4-6: Internal CCLD DIP Switches